

REPORT PRESS RELEASE

food artist Ayako Suwa and 2AM:lab present **JOURNEY ON THE TABLE.**

'JOURNEY ON THE TABLE' is a successful collaboration between food artist, Ayako Suwa (Food Creation) and Singapore's popular chef, Janice Wong (2am:lab). This special dinner was held on 26, 27 and 28 February, at 2am:lab in Singapore. Every guest experienced the life journey of a migrant bird through all senses in a 7-course menu.



1. LAKE 湖

gentle stream, something falling in the water, wavy water surface, reflecting light, waterside inhabitant  
ゆるやかな流れ、水に落ちるなにか、たゆたう水面 反射する光、水辺の住人たち



## 2. GRASSLAND 草原

rustling weeds, wind moving across, filled with blossoming flowers.

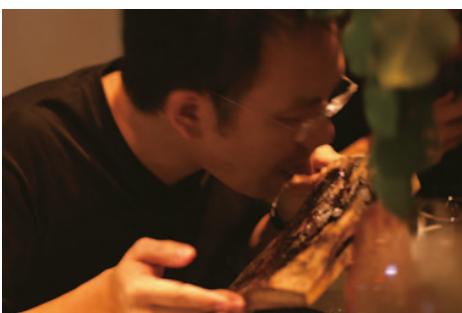
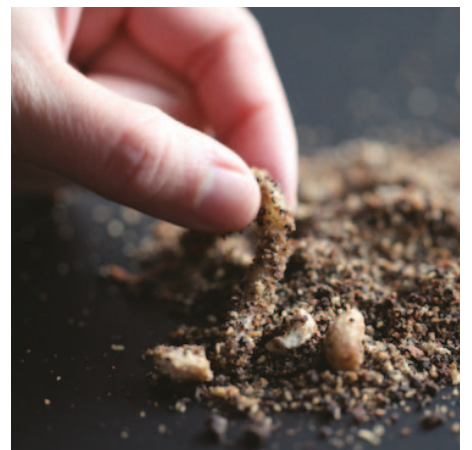
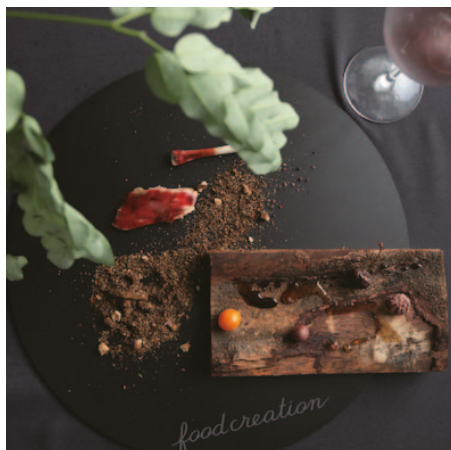
ざわめく雑草、吹き抜ける風、咲き乱れる花



## 3. FOREST. WOODS. MOUNTAINS 森、林、山

wriggling in the soil, atmosphere of animals, thick green forest, ripe fruits

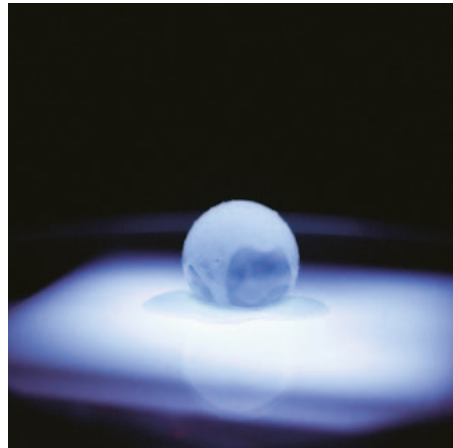
うごめく土の中、動物の気配、うっそうと生い茂る木々 熟した果実



4. PLAINS 平野

dark night, stone rolling over the rock surface, roaring thunder, rumbling of the earth, full moon

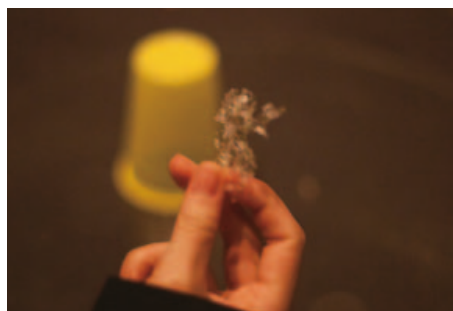
夜の暗闇、岩肌にころがる石、降りだした雪、カミナリ鳴り響く地響きとどろく・満月



5. CITY 都市

human atmosphere, shelter under the factory awning, vinyl, plastic, cement, asphalt, metal, steady rain

にんげんの気配、工場の軒下で雨宿り ビニール プラスティック セメント、アスファルト、金属、降り止まない雨



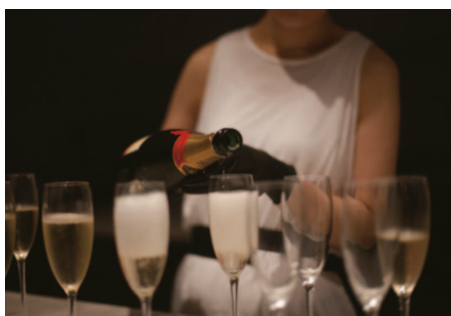
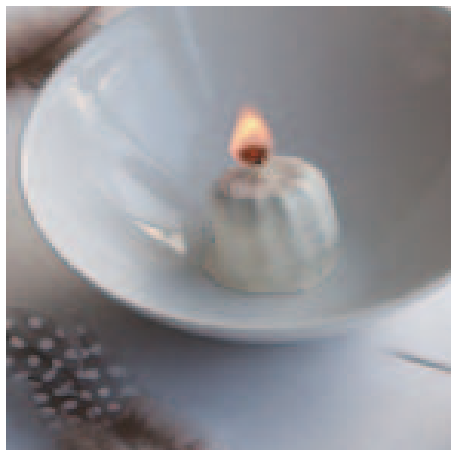
6. COAST. OCEAN 海岸、海原

as far as you can see the sandy beach, the edge of water, sea breeze, an endless ocean

見渡すかぎりの砂浜、波打ち際、そよく潮風 どこまでも続く水平線



7. JOURNEY CONTINUES 旅はさらにつづく



Degustation is like a journey.  
Follow your endless impulsion,  
follow your intuition,  
and let's fly on.

Travel with no known destination,  
without any planned route.  
Just sharpen your senses,  
and get in touch with your inner self.

Your instinct indicates where to go...

Like a migrant bird.

This Message was on the menu



food artist / Ayako Suwa

Born in Ishikawa Japan in 1976. Graduate in visual design of Kanazawa college of art in 1999. Start the works of “food creation” in 2006. The concept of food creation is “The concept reaches your stomach”. New taste to eat with a message such above. Ayako Suwa’s art work is named food creation. It is expressed by new methods such as conceptual catering, food performances, and exhibitions.

Her career as the food artist began with an exhibition, “sensuous food, emotional taste,” held at the 21st Century Museum of Contemporary Art, Kanazawa from July to September, 2008. The edible art work is not categorized into any established style. This exhibition has received high praise from both artistic and cuisine points of view. After that, she held some exhibitions and performances in Singapore, Paris and Hong Kong successfully. The adventure of “tasting a unusual food” proved to be an exciting experience for people throughout the world. Many artists have expressed feelings and emotions of human beings by music, an image or a sculpture from ancient times, but surprisingly no one has tried it by food except for Ayako Suwa. A series of edible art work, “sensuous food, emotional taste,” is created by the combination of complicated ingredients and expressed various feelings and emotions of human beings.



2am:lab | 